



# Sydney MSIC

Yearly trends and front line issues

Dr Marianne Jauncey

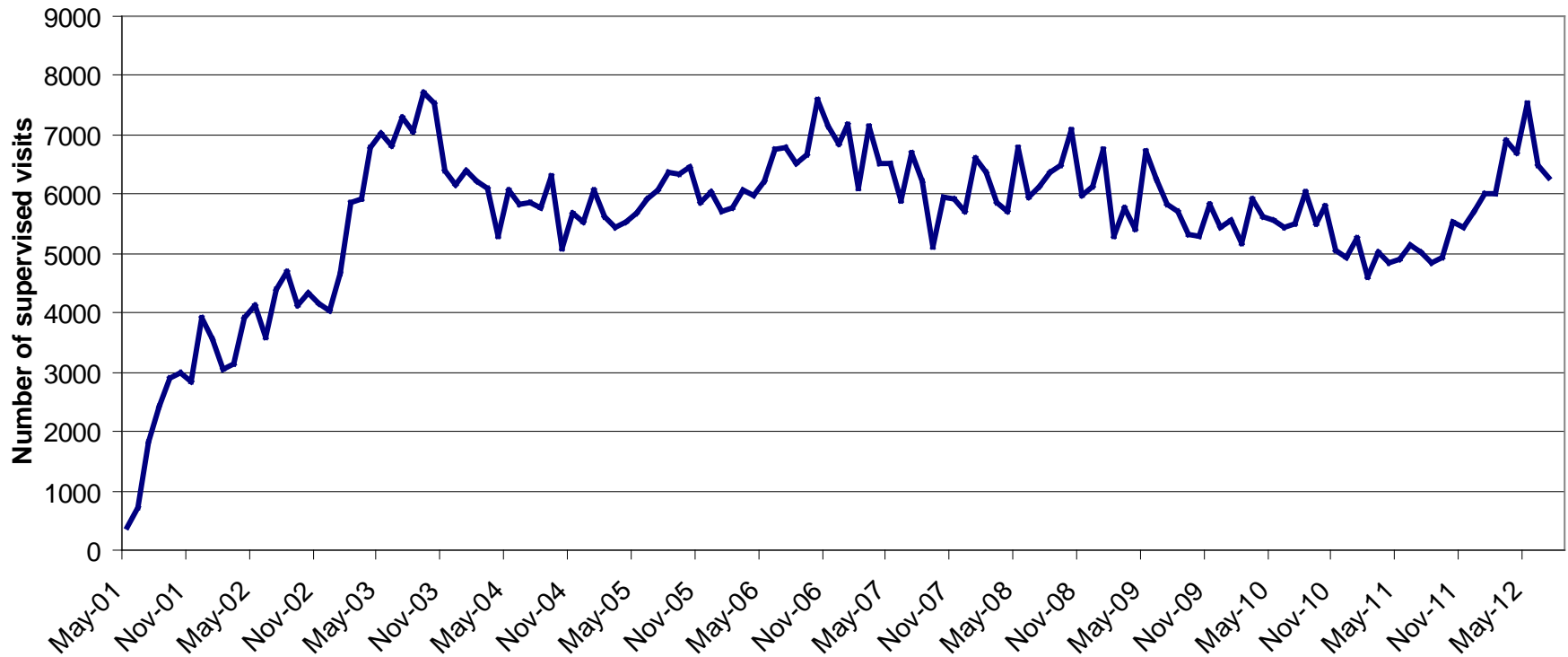
Medical Director

# Briefly

- Only supervised injecting centre in Southern Hemisphere
- Finally bipartisan support from NSW State Government
- Increasing support for MSIC in Melbourne

# Trend in visit numbers

Total number of visits per month to MSIC



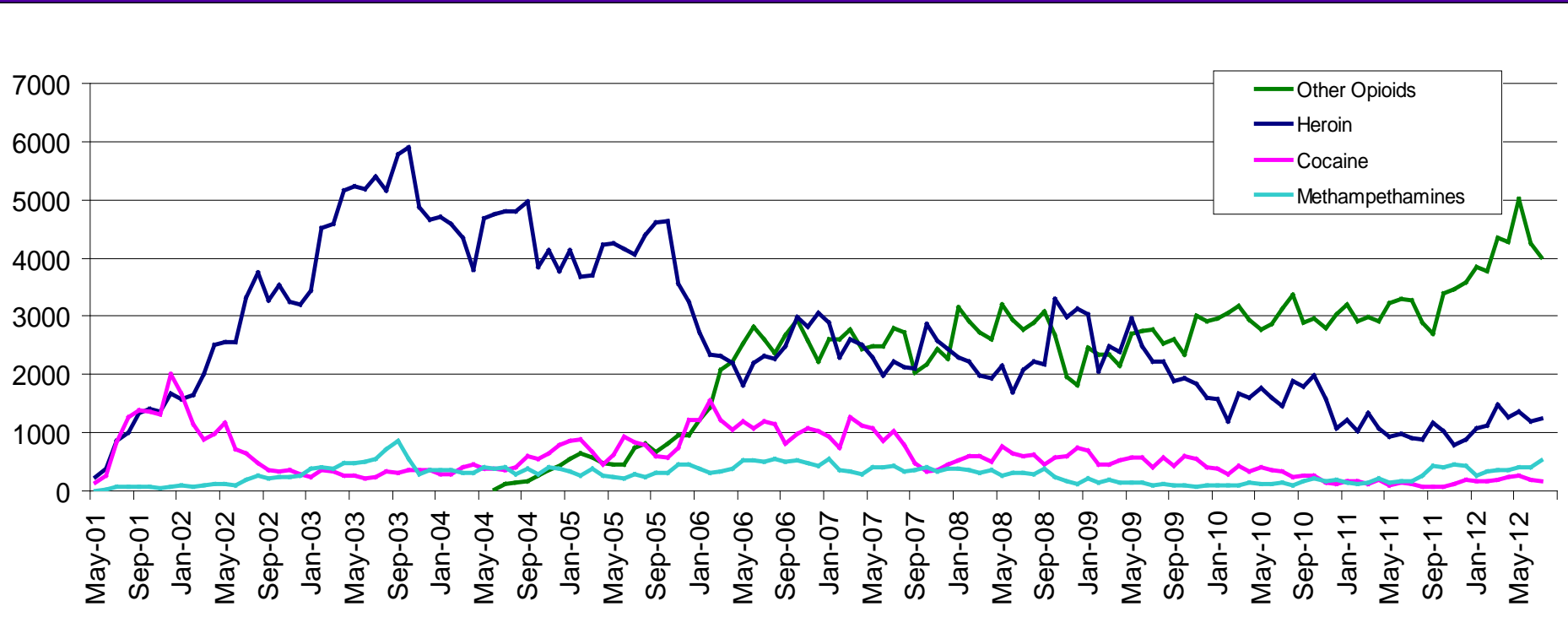
# Relevant stats related to visits

- Service open  $\sim 80$  hours/week
- Current average of  $\sim 225$  visits per day (more like 260 on weekdays, 150 on weekends)
- Approx 750 individual people/month and 2500 people/year.

# Reasons for fluctuations

- ?Seasonal variation
- ?Access / drug supply
- ?Change in type of drugs available
- ?Changes in cohort of PWIDs in KX
- ?Policing practices
- ?Access to treatment

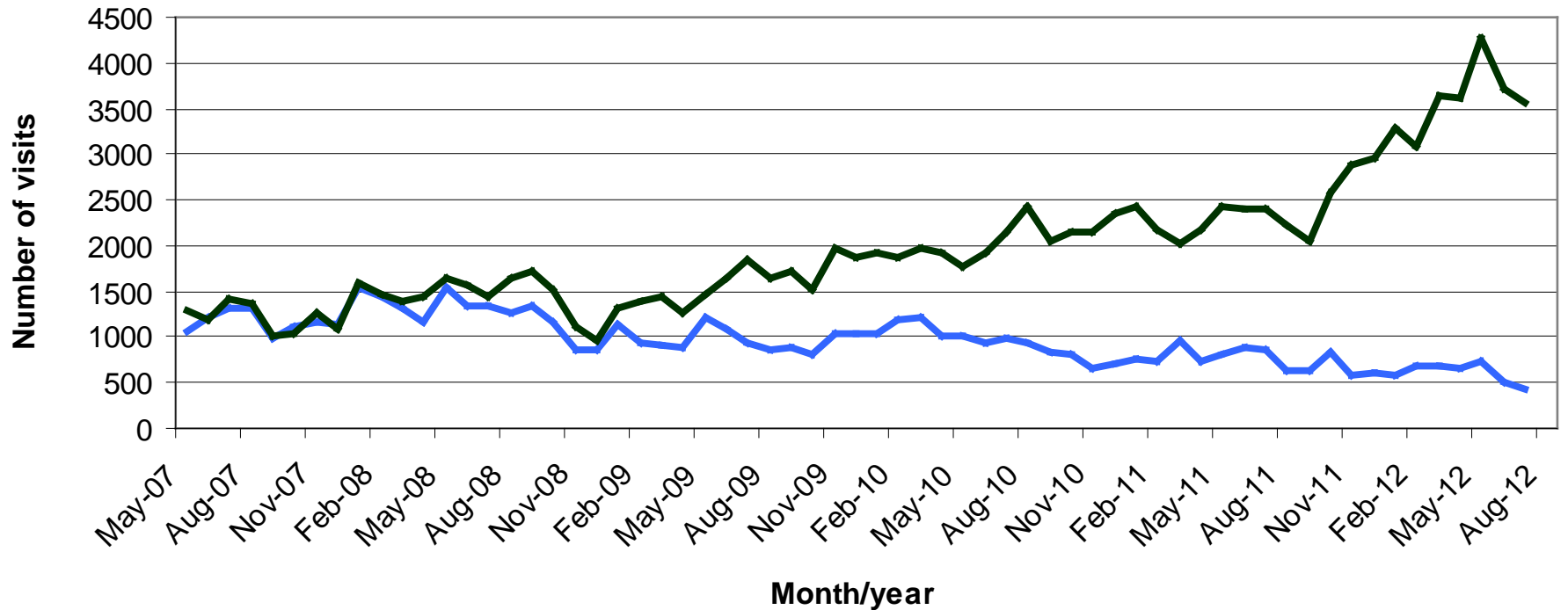
# Number of monthly visits, by drug type



# Breakdown of other opioids

## Number of visits per month

Oxycodone versus Morphine



# Service implications

- Increased time
- Increased resources
  - Spoons
  - Filters
  - Water
  - Different syringes

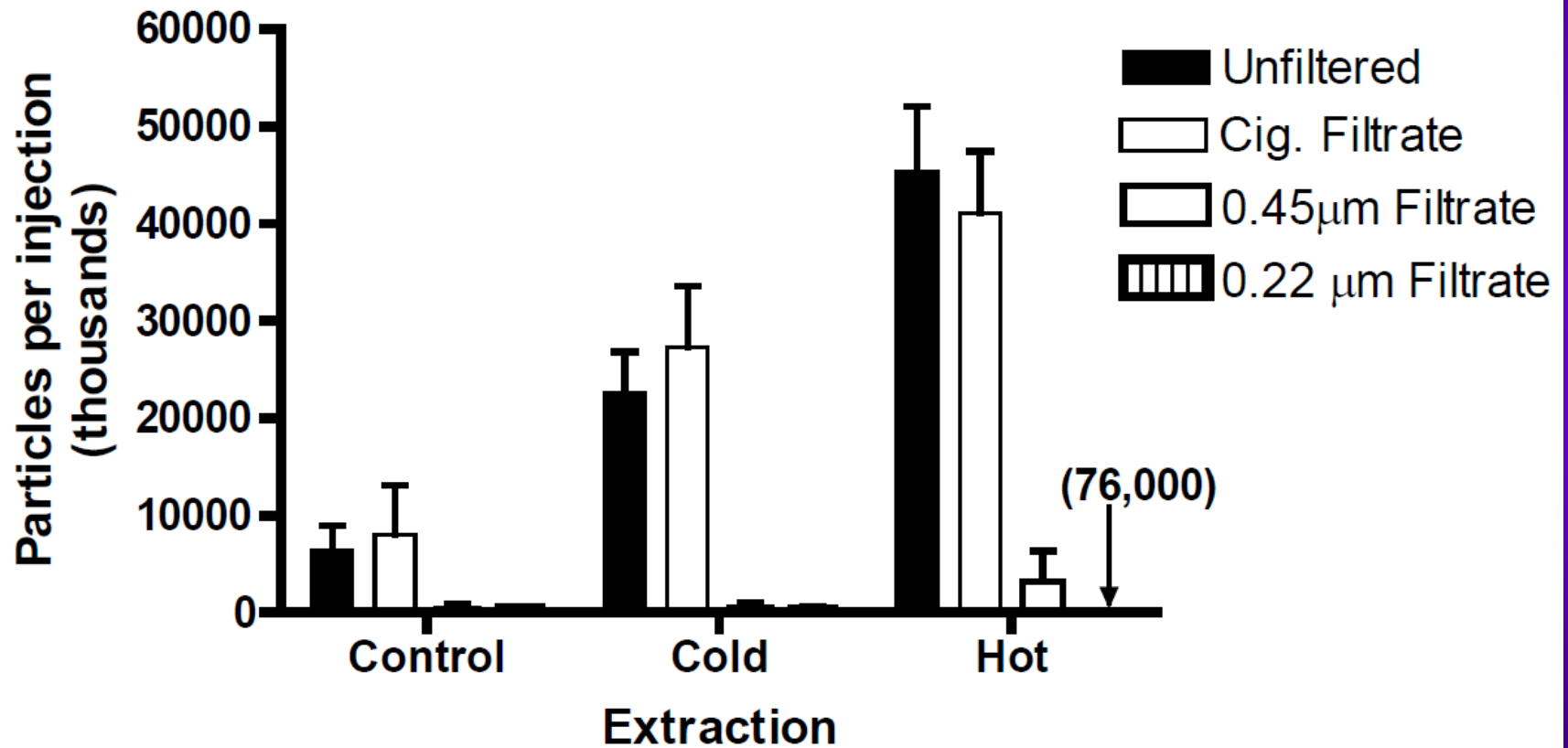


# User implications

- Soft tissue injuries? Not more than other drugs
- Overdose risk? No, actually less
- Pulmonary complications? Yes

Videos here

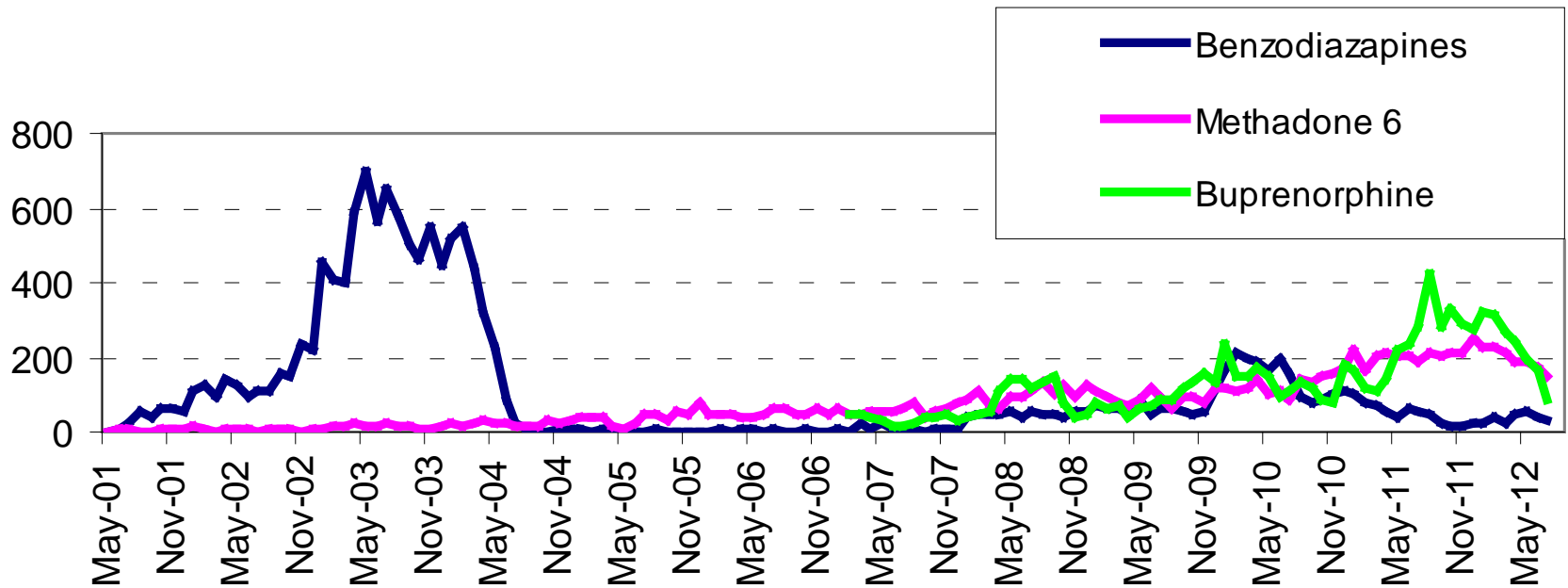
# Particles <5 $\mu$ m cold & hot



Reproduced with thanks from Dr Raimundo Bruno, Prof Stuart McLean and colleagues, University of Tasmania

# Other prescribed drugs

Number of monthly injections of prescribed drugs



# And more recently, fentanly...

- Durogesic transdermal patches
- Still only sporadic and small numbers
- But:
  - Not water soluble, so citric/lemon juice used
  - Strong, therefore overdose risk is high

# Summary

- MSIC still seeing large numbers of people and supervising large numbers of injections
- Shift from heroin to prescription opioids, predominantly Oxycontin
  - Implications from change in formulation?
  - Implications from national prescription monitoring?
- Difficult to change preparation habits, from heating to cold mix, and using filters
- Real time trends evident from service like MSIC

# Acknowledgements

- Richard Sulovsky for videos
- Staff and clients of MSIC
- UnitingCareNSW.ACT

Open invitation to all to visit.

Thank you  
Questions?

Dr Marianne Jauncey

Email: [mjauncey@sydneymsic.com](mailto:mjauncey@sydneymsic.com)