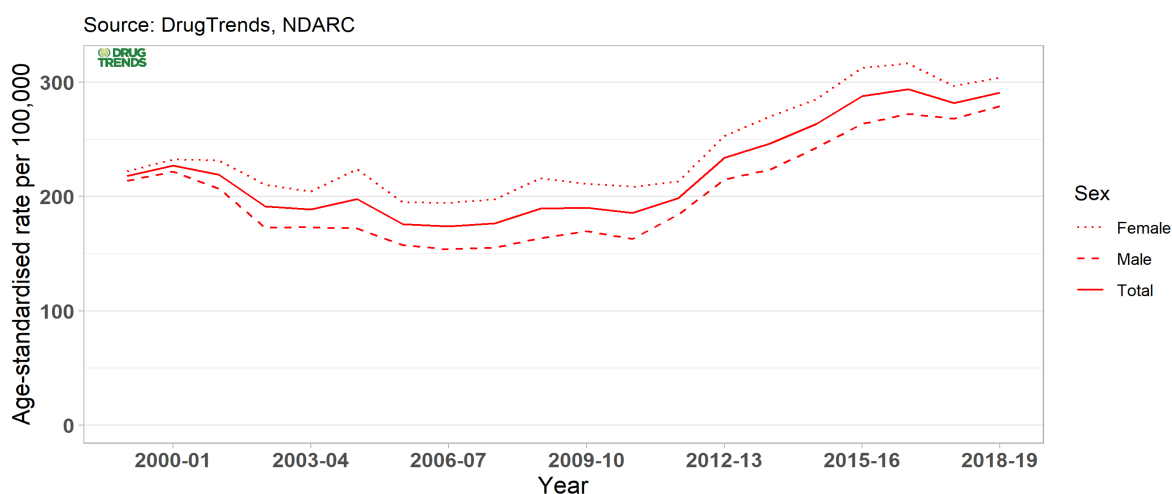


Trends in drug-related hospitalisations in Queensland, 1999-2019

Authors: Nicola Man, Agata Chrzanowska, Rachel Sutherland, Louisa Degenhardt and Amy Peacock

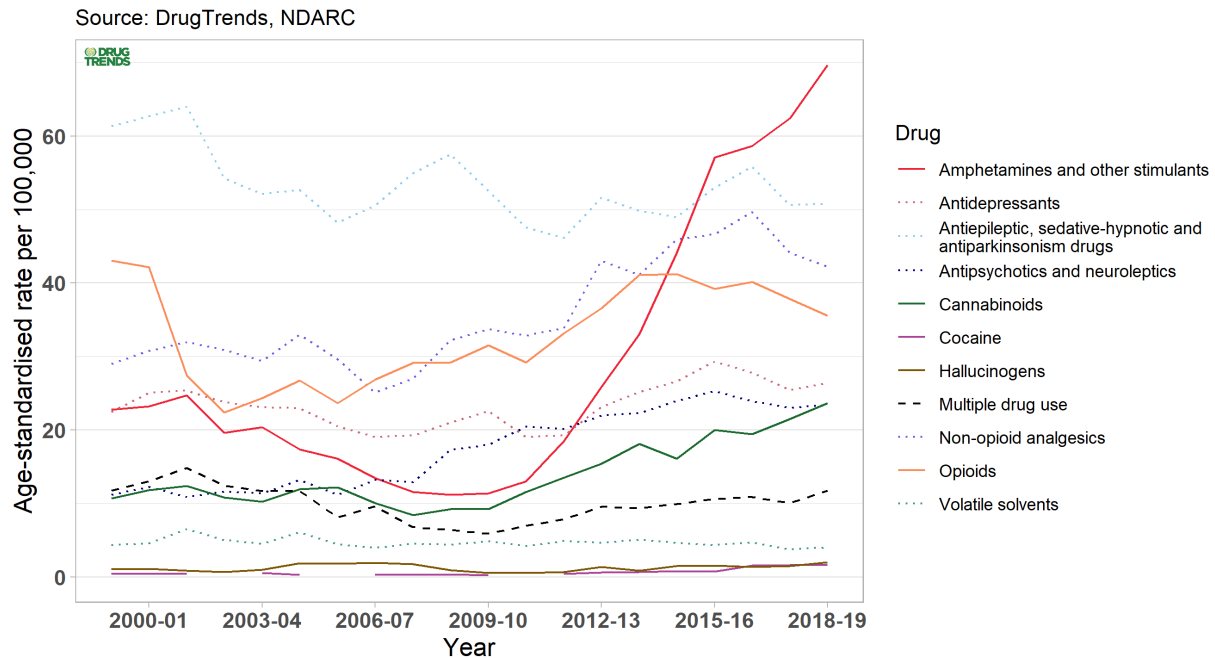
- There were 14,280 hospitalisations with a drug-related principal diagnosis in QLD in 2018-19.
- This is equivalent to 291 hospitalisations per 100,000 people, as compared to 218 hospitalisations per 100,000 people in 1999-00 (**Figure 1**).
- The rate of hospitalisations was higher among females than males in 2018-19 (304 versus 279 hospitalisations per 100,000 people).
- In 2018-19, the rate of hospitalisations was highest among the 20-29 age group, followed by the 30-39 and 40-49 age groups (544, 460, and 368 hospitalisations per 100,000 people, respectively).
- The rate of hospitalisations was highest where there was a principal diagnosis indicating amphetamines and other stimulants (70 hospitalisations per 100,000 people; **Figure 2**).
- The highest rate of hospitalisations was observed in outer regional QLD (333 hospitalisations per 100,000 people), while the number of hospitalisations was highest in major cities (9,358 hospitalisations; **Figure 3**).

Figure 1. Age-standardised rate (per 100,000 people) of drug-related hospitalisations, by sex, Queensland, 1999-00 - 2018-19.



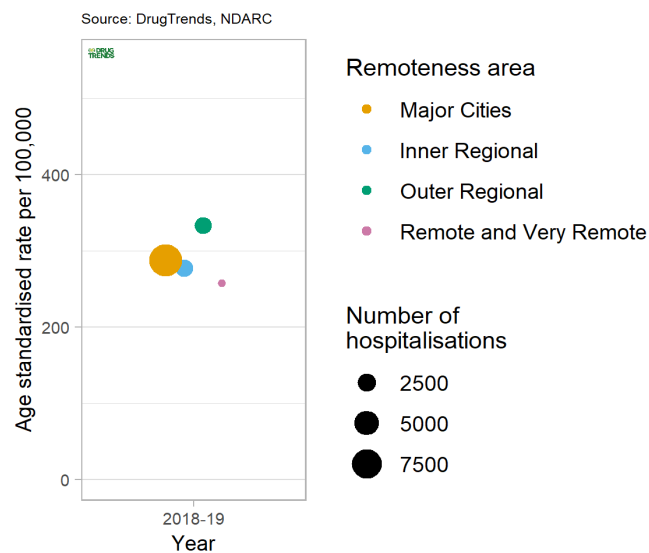
Funded by the Australian Government Department of Health under the Drug and Alcohol Program ©NDARC, UNSW SYDNEY 2021. This work is copyright. You may download, display, print and reproduce this material in unaltered form only (retaining this notice) for your personal, non-commercial use or use within your organisation. All other rights are reserved. Requests and enquiries concerning reproduction and rights should be addressed to NDARC, UNSW Sydney, NSW 2052, Australia via drugtrends@unsw.edu.au

Figure 2. Age-standardised rate (per 100,000 people) of drug-related hospitalisations, by drug identified in the principal diagnosis, Queensland, 1999-00 - 2018-19.



Note: Age-standardised rates were not calculated if the number of hospitalisations was less than or equal to 10 (please refer to our [methods](#) document for details). Suppressed data are visible as gaps in the data series.

Figure 3. Age-standardised rate (per 100,000 people) of drug-related hospitalisations, by remoteness, Queensland, 2018-19.



Note: Data by remoteness area was only provided for 2018-19 in Queensland. The size (area) of the bubble is proportional to the number of hospitalisations.

Funding

The Drug Trends program is funded by the Australian Government Department of Health under the Drug and Alcohol Program.

Acknowledgements

We would like to acknowledge the Australian Institute of Health and Welfare for data from the National Hospital Morbidity Database.

Recommended citation

Man, N., Chrzanowska, A., Sutherland, R., Degenhardt, L. & Peacock, A. (2021). Trends in drug-related hospital separations in Australia, 1999-2019. Drug Trends Bulletin Series. Sydney: National Drug and Alcohol Research Centre, UNSW Sydney.

Related Links

- Hospitalisations data visualisations: https://drugtrends.shinyapps.io/hospital_separations
- Hospitalisations methods document: <https://ndarc.med.unsw.edu.au/resource-analytics/trends-drug-related-hospitalisations-australia-1999-2019>
- For information on drug-induced deaths in Australia, go to: <https://ndarc.med.unsw.edu.au/resource-analytics/trends-drug-induced-deaths-australia-1997-2019>
- For more information on NDARC research, go to: <http://ndarc.med.unsw.edu.au/>
- For more information about the AIHW and NHMD, go to: <https://www.aihw.gov.au/>
- For more information on ICD coding go to: <http://www.who.int/classifications/icd/en/>
<https://www.ihsa.gov.au/what-we-do/icd-10-am-achi-acsc-current-edition>
- For more research from the Drug Trends program go to: <https://ndarc.med.unsw.edu.au/program/drug-trends>

Contact us

Email: drugtrends@unsw.edu.au