

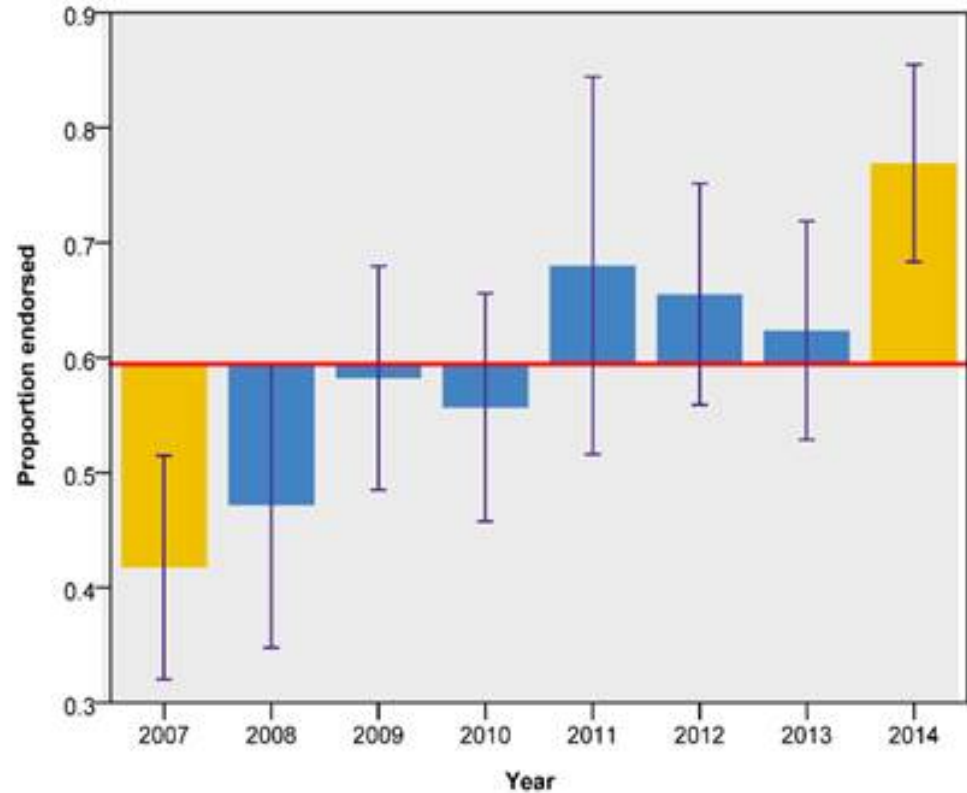
Trends in pharmaceutical stimulant use in WA EDRS samples: 2007-2014

Marina Nelson and Prof. Simon Lenton
National Drug Research Institute, Curtin University, Western Australia

Table 1: Reported recent illicit PS use

Year	Recent use (%)
2007	44
2008	50
2009	58
2010	58
2011	67.9
2012	64.4
2013	62
2014	77

Figure 1: Deviations from the mean in the proportion of reported recent illicit PS use





"..there is a significant upward trend in reported recent illicit pharmaceutical stimulant use over the last eight years."